



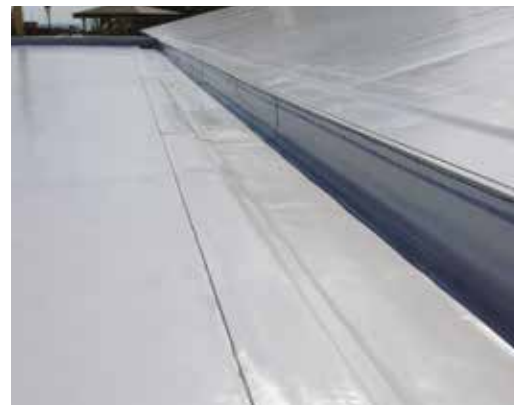
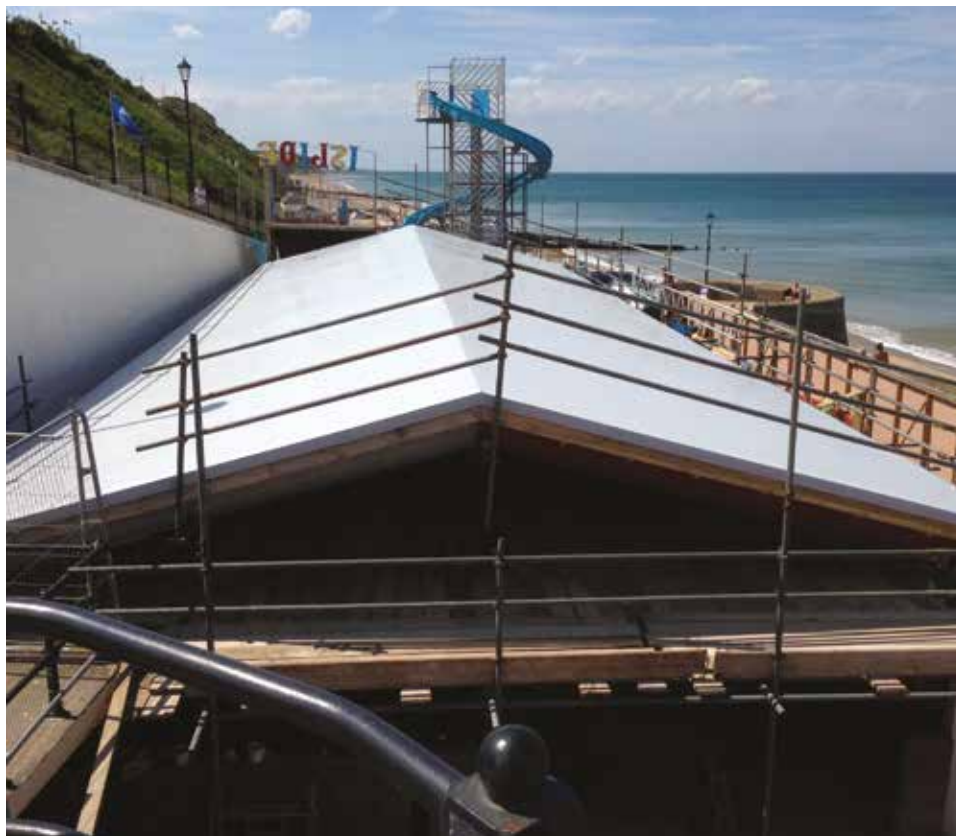
SIKA AT WORK

DUNES AMUSEMENTS, CROMER, NORFOLK

Sarnafil®



DUNES AMUSEMENTS, CROMER, NORFOLK



PROJECT REQUIREMENT

A devastating storm surge that hit the east coast two years ago damaged many properties up and down the country. Dunes Amusements in Cromer, Norfolk, was one of the businesses destroyed by the storms and worked with Norfolk Pro Build, Gray and Jarrett and Sika Sarnafil to repair the damage in order to open to the public once again.

Dune Amusements, owned by Triangle Amusements, was completely ripped apart by the tide, owing to its prominent position on the sea front. All 60 arcade machines, popular with families, were destroyed and only the shell of the building remained. As it was in such a bad state, a total refurbishment was needed from the ground up.

The rebuild required a roofing solution that would not only look aesthetically pleasing, as it would be visible from the town above, but would also endure the coastal environment.

SIKA SARNAFIL SOLUTION

The front curved protrusion of the arcade was completely washed away, so the building was stripped back to its steel frame. Norfolk Pro Build put a new concrete floor down and then re-built the external shell and roof around the steel frame.

Our most current General Sales Conditions shall apply.
Please consult the Data Sheet prior to any use and processing.



FM 12504



EMS 45308



OHS 585274

SIKA LIMITED

Sika Sarnafil,
Watchmead,
Welwyn Garden City,
Hertfordshire, AL7 1BQ

Contact

Tel 01707 394444
Fax 01707 329129
Email sarnafilroofing@uk.sika.com
www.sarnafil.co.uk

The project was one of the first in the country to use Sika Sarnafil's new Self Adhered roofing membrane. Chosen because of its ability to withstand tough weather conditions, an important consideration when specifying products for buildings by the sea, the membrane also offered the added advantage of speedy installation time.

Gray and Jarrett undertook the roofing portion of the project, firstly removing the existing strawboard decking down to the steel frame and replacing with a steel corrugated deck. Applying a Sarnavap 500E as the vapour control layer, followed by new insulation, they then installed the Sika Sarnafil Self Adhered Membrane, G410-15EL FSA in light grey.

The roofing contractor was impressed with the performance of the Self Adhered product. Installation was fast, thanks to the innovative peel and stick method. A great choice for the coastal location, the membrane withstood wind uplift and difficult weather conditions. Self Adhered is strong and durable, giving instant, lasting protection.

The membrane gave a smooth, sleek finish to the roof – a specification requirement of architects, Canham Consulting, as people would be looking down on the roof from the town above. Completed at the end of summer 2014, Dunes Amusements could open its doors once again, to entertain tourists and local people alike.

PROJECT PARTICIPANTS

Product: Sika Sarnafil Self Adhered roofing membrane, G410-15EL FSA in light grey
Contractor: Gray and Jarrett

Sarnafil®

