



# Sika Sarnafil - SARNALITE ROOFLIGHTS

**Sarnafil**®



# RELEASE THE ENERGY SAVING BENEFITS OF NATURAL DAYLIGHT WITH SARNALITE



## CONTENTS

<b>3</b>	The Natural Choice For Natural Light
<b>4</b>	Performance and Style
<b>5</b>	Standard / Architectural Domes
<b>6/7</b>	Configuration and Flexibility
<b>8</b>	SarnaLite Circular and SarnaLite Reflex
<b>9</b>	Access Solutions
<b>10</b>	Special Products
<b>11</b>	Reducing CO <sub>2</sub>



WHEN YOU CHOOSE A SARNALITE ROOFLIGHT, YOU CHOOSE A SUPERBLY ENGINEERED ROOFLIGHT UNIT DESIGNED AND MANUFACTURED BY INDUSTRY SPECIALISTS, WHO ARE THE UK'S LARGEST MOST INNOVATIVE ROOFLIGHT COMPANY.

### **THE NATURAL CHOICE FOR NATURAL LIGHT**

This means your decision is backed by the security of dealing with an established company with over 50 years industry experience, full technical support from product selection through to installation and complete after-sales back up.

It also means that each SarnaLite rooflight has been developed by an in-house R&D team to deliver exceptional functionality, guaranteed performance and contemporary design.

And, to ensure that excellent design translates to an excellent product every-time, each SarnaLite rooflight is manufactured in the UK in environmental and quality accredited facilities and backed by comprehensive guarantees.

For complete peace of mind, SarnaLite rooflights are BBA approved.



# SARNALITE ROOFLIGHTS COMBINE STYLE, CHOICE AND EXCEPTIONAL PERFORMANCE



## CONTEMPORARY STYLE

Sleek, contemporary aesthetics inside and out have been central to the design vision for SarnaLite. The clean lines complement the glazing giving the overall impression of a modern, stylish rooflight feature. An architectural aluminium security frame on SarnaLite Ultra conceals the security fixings for a superior finish. Internally, all cabling and actuators can be hidden within the kerb on mains powered units for an uninterrupted streamlined lightwell which contributes to the overall design architecture of internal spaces.

## EASE OF INSTALLATION

Ease of installation has been a key consideration in the redesign of SarnaLite. Every SarnaLite is delivered complete and ready to fit. The new multi-wall kerb is robust and resilient to damage during installation. The kerb foot has been specially designed to allow the roof covering to be finished without the need for any timber fillets. We have incorporated a pre applied adhesive tape, which holds the Sarnafil membrane in-place during installation and means no additional adhesive is required. The factory fitted membrane clamp on the kerb acts to prevent peel back of the roof covering once fitted.

## HIGH INSULATION

We recognise that our rooflights have an important part to play in the energy efficiency of your building. So SarnaLites are designed to be insulated without compromising on the quality of natural light transmission.

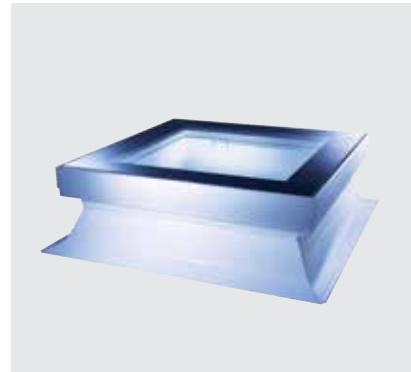
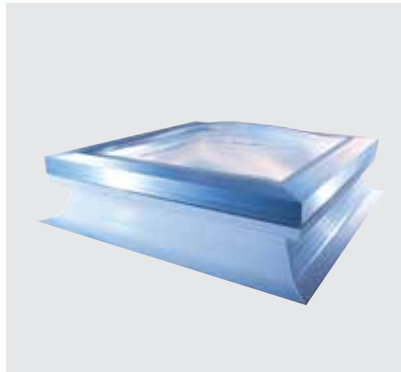
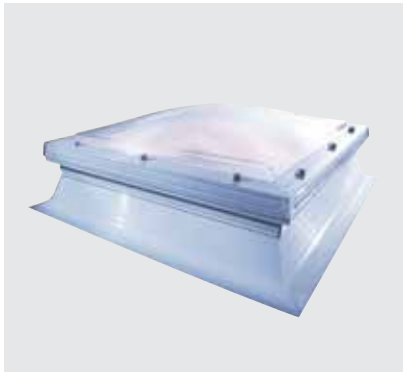
A new multi-wall kerb has been incorporated to achieve higher levels of insulation. The unique glazing cassette improves thermal performance and facilitates more energy efficient triple and quad skin glazing options. The overall result is that triple skin SarnaLite rooflights achieve a centre pane U-value of  $1.8 \text{ W/m}^2\text{K}$  and a Ud-value which ranges from  $1.25 \text{ W/m}^2\text{K}$  for a  $600 \times 600 \text{ mm}$  dome to  $1.51 \text{ W/m}^2\text{K}$  for a  $1200 \times 2400 \text{ mm}$  dome. Higher performance glazing options can further reduce the Ud-value to as low as  $0.95 \text{ W/m}^2\text{K}$ , exceeding the requirements of Part L of The Building Regulations and helping to achieve BREEAM credits.

## NOISE REDUCTION

We thoroughly understand the acoustic requirements for SarnaLite and have developed an Acoustics Pack for use in applications where rain or external noise are a consideration. Our acoustics solutions may be specified in these instances to provide noise insulation and achieve BREEAM credits.

# THE FLEXIBILITY TO SPECIFY THE ROOFLIGHT YOU NEED FOR ANY APPLICATION

STARTING WITH THE SARNALITE TRADE AND ARCHITECTURAL ULTRA, AND STEPPING UP TO THE SARNALITE GLASS, THE TOP SPECIFICATION ROOFLIGHT, EACH MODEL FEATURES IMPROVED PERFORMANCE AND STYLING.



## **SARNALITE TRADE - STANDARD DOME**

SarnaLite Trade is the standard specification dome unit providing excellent insulation, triple skin SarnaLite rooflights achieve a centre pane U-value of  $1.8 \text{ W/m}^2\text{K}$  and a Ud-value which ranges from  $1.25 \text{ W/m}^2\text{K}$  for a  $600 \times 600 \text{ mm}$  dome to  $1.51 \text{ W/m}^2\text{K}$  for a  $1200 \times 2400 \text{ mm}$  dome. Higher performance glazing options can further reduce the Ud-value to as low as  $0.95 \text{ W/m}^2\text{K}$ .

- Contemporary low rise profile
- Saves energy with options to reduce the Ud-value to as low as  $0.95 \text{ W/m}^2\text{K}$
- Unique glazing cassette in triple and quad skin domes, minimises the risk of condensation
- All power components are discreet for a streamlined lightwell
- Extensive options to satisfy requirements for acoustics, ventilation and light transmission
- For ease of installation the tapered kerb foot does not require timber fillets and a pre applied adhesive tape holds the membrane in place during installation

## **SARNALITE ULTRA - ARCHITECTURAL DOME**

SarnaLite Ultra delivers maximum security and high insulation in a sleek, stylish design package. Tamper proof fixings are concealed beneath a modern aluminium security frame, and a secret lock system allows domes to be installed and locked securely into place providing the highest possible security level.

- The contemporary low rise dome design is complemented by a stylish aluminium frame which is available in a silver anodised finish or powder coated to any standard RAL colour
- Saves energy with options to reduce the Ud-value to as low as  $0.95 \text{ W/m}^2\text{K}$
- Unique glazing cassette in triple and quad skin domes, minimises the risk of condensation
- All power components are discreet for a streamlined lightwell
- Extensive options to satisfy requirements for acoustics, ventilation and light transmission
- For ease of installation the tapered kerb foot does not require timber fillets and a pre applied adhesive tape holds the membrane in place during installation
- Security fixings are concealed for maximum security and complete peace of mind
- The secret lock system locks the dome into place and can only be opened with the SarnaLite security key

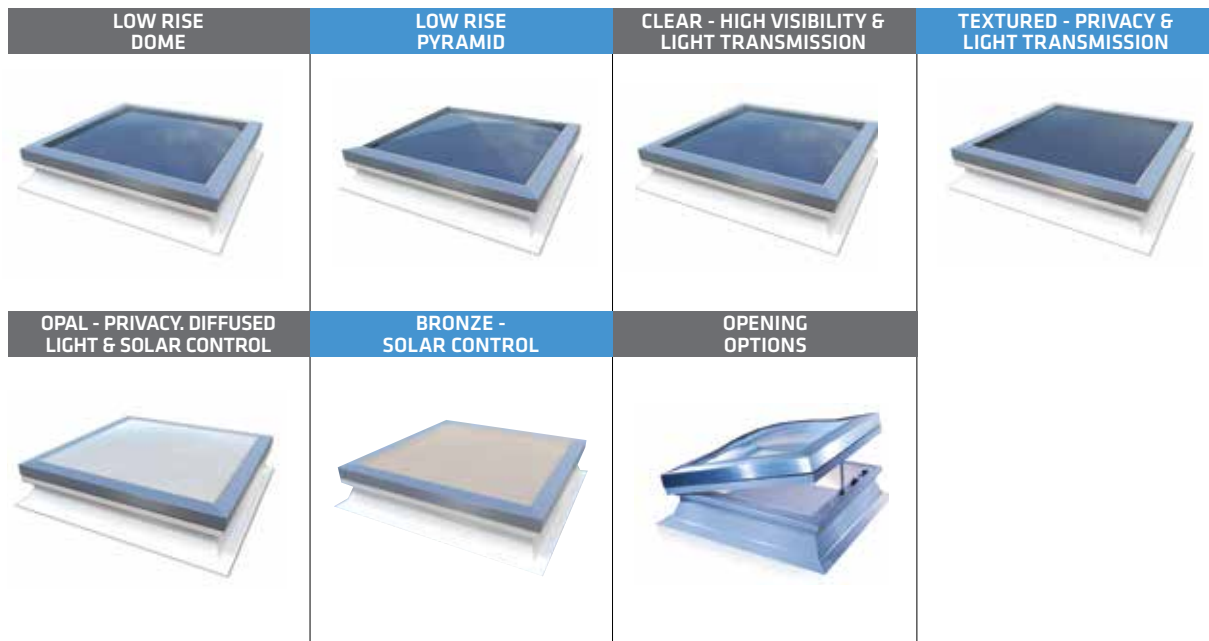
## **SARNALITE GLASS - FLAT GLASS ROOFLIGHT**

Sarnalite Glass feature an ultra-modern flat glass design which allows natural daylight to flood into a building. Ensuring the ultimate in performance, the thermally efficient double glazed unit is framed by a silver anodised aluminium frame, which combines to deliver both high end design and the best standards in security and safety.

- The flush flat glass design provides an attractive design feature particularly on overlooked roofs
- The multi-wall kerb features thermally efficient walls which also contributes to high insulation levels providing a centre pane U-value<sup>1</sup> of  $1.4 \text{ W/m}^2\text{K}$  and a Ud value of  $1.25 \text{ W/m}^2\text{K}$  for the whole roof light.
- Security fixings are concealed for maximum security and complete peace of mind
- The secret lock system locks the glass into place and can only be opened with the Sarnaglass security key
- Reduced acoustic performance

# SARNALITE CONFIGURATION

OFFERING THE WIDEST POSSIBLE FLEXIBILITY, SARNALITE ROOFLIGHTS CAN BE INDIVIDUALLY CONFIGURED TO THE REQUIRED SIZE, IN A RANGE OF GLAZING, VENTILATION AND OPENING OPTIONS TO SUIT YOUR APPLICATION.



## GLAZING

Glazed with Marlon FSX Longlife polycarbonate and available in double, triple and quad skin units depending on the level of thermal insulation required.

### Additional glazing options include:

- Double glazed glass inner glazing (standard or argon filled) - improved Ud-values, acoustics and aesthetics
- 25mm structured polycarbonate inner glazing - improved thermal performance

## OPENING OPTIONS

- Manual opening with extension pole
- Powered opening
- Solar Powered Openings
- Powered opening with RF remote control handset
- Powered opening with RF remote control handset and rain sensor
- Access Hatch - Lockable from the inside, this gas strut assisted opening unit can be used to gain access to the roof, used in conjunction with a suitable ladder/other means of access (not supplied)

## SIZE AND SHAPE

Available in standard sizes from 600x600mm up to 1800x1800mm with a choice of low rise dome or low rise pyramid shaped glazing units.

## VENTILATION

- Trickle Vents (Manual) - Standard Spec
- Automatic (Humidity Controlled) - Superior
- High extraction ventilation

## KERB OPTIONS

- SarnaLite Standard kerb allows a height to roof covering termination of 150mm
- SarnaLite Tall Kerb allows a height to roof covering termination of 300mm -(ideal for refurbishment projects where insulation is being added on top of the existing roof and for tapered insulation projects)
- SarnaLite GRP soaker available for metal clad roof applications

In comparison to traditional kerbs, the steepness allows increased glazing of the SarnaLite, providing significantly more daylight into the area below.

## ACCESSORIES

- Kerb adaptor allows standard sized domes to be fitted on non-standard size upstands
- Security grille
- Telescopic opening poles (to a maximum extension of 3m)
- Power pleated blinds

## ACOUSTICS PACK

The Acoustics Pack should be specified where a reduction in rain or external noise transmission is required (not available with ventilated or opening domes).

# SPECIAL PRODUCTS TO SUIT YOUR APPLICATION

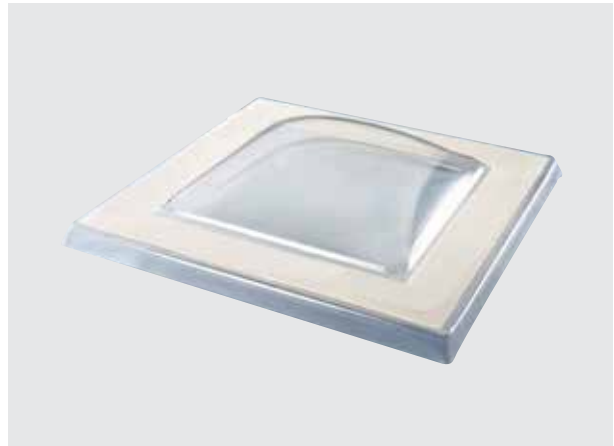
## SARNALITE CIRCULAR



SarnaLite Circular, as its name suggests is our round glazing unit which is specified for its distinct styling and character. It features a strong and robust GRP kerb.

- Circular dome option
- Robust and weatherable GRP kerb
- Double and triple skin units available

## SARNALITE REFLEX



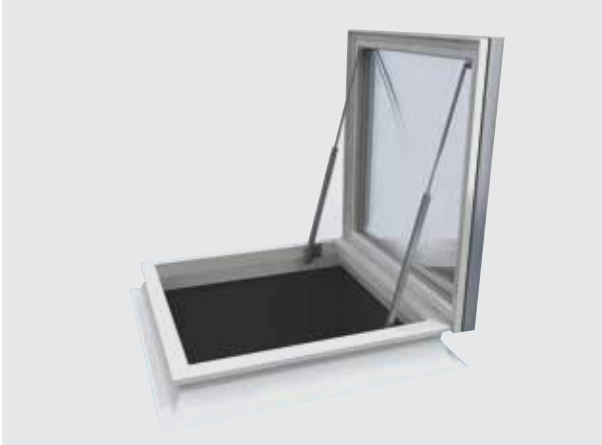
SarnaLite Reflex is a glazing only unit designed specifically for refurbishment projects where the glazing only needs to be replaced. The unit is supplied with a fixing kit including weathertight washers and cover plugs. Manufactured from Marlon FSX Longlife polycarbonate, this glazing unit is up to 200 times stronger than glass. The high resistance to breakage and adverse weather conditions means SarnaLite Reflex is very safe and reliable.

- Dome, pyramid and circular options
- Can be mechanically fixed to existing kerbs without a kerb adaptor
- Single, double and triple skin units available
- Available with standard 70mm or 100mm wide flange options



# SARNALITE IS ALSO AVAILABLE IN A SELECTION OF ACCESS HATCHES

## ACCESS HATCHES



SarnaLite includes a range of access hatches for each of the Trade and Ultra rooflights. Hatches use gas springs to facilitate a 90° opening. The access hatches are configured to match a range of specifier's requirements including insulation, security and light transmission.

# A RANGE OF SARNALITES, FOR WHEN THE JOB'S A LITTLE LESS ORDINARY



SARNALITE ROOFLIGHTS COMPRISE A RANGE OF SPECIAL PRODUCTS WHICH HAVE BEEN DEVELOPED OVER TIME TO FULFIL DISTINCT AND SPECIFIC MARKET REQUIREMENTS THAT ARE A LITTLE OUT OF THE ORDINARY.

The comprehensive range of SarnaLite rooflights allows for architects, specifiers, contractors and building owners to incorporate natural daylight as an integral design feature of the building. SarnaLite Rooflights not only achieve the architectural vision of the facility but can completely satisfy current building regulations and sustainability targets. SarnaLites are the ideal way to create architecturally impressive roof glazing in a variety of shapes, sizes, frame colours and glazing options. SarnaLite rooflights are also available in an extensive range of glazing materials including polycarbonate, GRP, glass and PVC.

## INDUSTRY STANDARDS

**SarnaLite rooflights are manufactured to the following industry standards:**

- Class B non-fragility in accordance with ACR[M]001:2005 providing safe, robust products which are resilient to impact and accidental damage.
- A thermal performance well in excess of the requirements of Part L of the Building Regulations for a more thermally efficient building, lower carbon emissions and a positive contribution to BREEAM ratings, especially when combined with artificial lighting controls.
- To comply with the requirements of BS EN 1873:2005 ensuring reliable all weather performance.
- The fire requirements as set out in the UK Building Regulations.
- Ventilation meets the requirements of BS EN 13141 Part 1 2004 for air flow, air leakage and weather tightness. A range of options including both background and purge ventilation can assist in satisfying the requirements of Part F as set out in the UK Building Regulations.
- ISO 9001 & 14001.

# REDUCING CO<sub>2</sub>



IN MOST BUILDINGS, SAVINGS CONTINUE TO BE ACHIEVED AS ROOFLIGHT AREA IS INCREASED UP TO 20% OF THE FLOOR AREA.

#### In buildings used primarily during daylight hours:

- The savings are significant as rooflight area increases up to 15% in all cases.
- Where illumination levels are relatively low, the further savings as rooflight area is increased above 15% are relatively minor
- There are significant further savings as rooflight area increases up to 20% at higher illumination levels.

#### In buildings used 24 hours a day:

- There are savings as rooflight area increases up to 15% in all cases.
- Where illumination levels are relatively low, the savings as rooflight area increases from 10% to 15% are relatively minor, with very slight increases in CO<sub>2</sub> emissions as area increases further, to 20%.
- At higher illumination levels, there are savings as rooflight area is increased up to 20%, but further savings as rooflight area is increased above 15% are relatively minor.

In most buildings the optimum will be around 15% of floor area, or in some cases up to 20%. In many cases, a reduced area of 15%, whilst less than optimum, will give most of the available savings in overall energy use and CO<sub>2</sub> emissions.



National Association of Rooflight Manufacturers  
- Designing with Rooflights and Controlled Artificial Lighting to Reduce CO<sub>2</sub> emissions  
- supporting the requirements of Building Regulations Part L2A & L2B.

# SIKA FULL RANGE SOLUTIONS FOR CONSTRUCTION:



**WATERPROOFING**



**CONCRETE**



**REFURBISHMENT**



**MERCHANT**



**SEALING AND BONDING**



**FLOORING**



**ROOFING**



**INDUSTRY**

## WHO WE ARE

Sika Limited is part of the global Sika Group, specialising in the manufacture and supply of chemical based products for construction and industry. Sika is a world-leader in its field with subsidiaries in 90 countries around the world and manufactures in over 160 factories. With approximately 17,000 employees Sika generates annual sales of CHF 5.6 billion (£3.9bn). We are also committed to providing quality, service, safety and environmental care.

In the UK, we provide market-leading solutions for concrete, waterproofing, roofing, flooring, refurbishment, sealing & bonding, and industry, and have manufacturing sites in Welwyn Garden City, Preston,

The information, and, in particular, the recommendations relating to the application and end use of Sika® products, are given in good faith based on Sika's current knowledge and experience of the products when properly stored, handled and applied under normal conditions. In practice, the differences in materials, substrates and actual site conditions are such that no warranty in respect of merchantability or of fitness for a particular purpose, nor any liability arising out of any legal relationship whatsoever, can be inferred either from this information, or from any written recommendations, or from any other advice offered. The proprietary rights of third parties must be observed. All orders are accepted subject to our current terms of sale and delivery. Users should always refer to the most recent issue of the Product Data Sheet for the product concerned, copies of which will be supplied on request..



FM 12504



EMS 45308



OHS 585274

## SIKA LIMITED

Sika Sarnafil,  
Watchmead,  
Welwyn Garden City,  
Hertfordshire  
AL7 1BQ

## Contact

Tel 01707 358500  
Fax 01707 329129  
Email [sarnafilroofing@uk.sika.com](mailto:sarnafilroofing@uk.sika.com)  
[www.sarnafil.co.uk](http://www.sarnafil.co.uk)  
@SikaSarnafilUK

## SIKA IRELAND LIMITED

Sika House  
Ballymun Industrial Estate  
Ballymun, Dublin 11  
Ireland

## Contact

Phone +353 1 862 0709  
Fax +353 1 862 0707  
E-Mail [info@ie.sika.com](mailto:info@ie.sika.com)  
[www.sika.ie](http://www.sika.ie)

**Sarnafil®**

